

Dimastech® Bench/Test Table Hard V2.5



Complete Installation Manual



Year of Publication 2010
Manual Version 1.0



COPYRIGHT

Copyright © 2010 - DIMASTECH SYSTEMS SNC – Sede
Legale in Via dell'Artigianato, 40 - 25039 Travagliato (Bs)
P. Iva e Codice Fiscale 03065680989

Iscritta al Registro delle Imprese di Brescia
al n. 03065680989
Numero REA: BS-502729

All the pics reported in this manual are propriety of
DimasTech Systems SNC
We would like to Thanks mr. Alessio Vincenzo Cannavale
for the Photos; the improper use or the propagation of
pics in that manual without express written permission
from DimasTech Systems SNC will be pursued at local law.

The Dimastech® Trademark is own propriety of DimasTech
Systems SNC.

It's severely forbidden the copy or partial copy of that
manual without express written permission from
DimasTech Systems SNC.

INDEX:

- Acknowledgments and introduction.....pag. 3
- Components List.....pag. 6
- Packaging.....pag. 8
- Fixing of Feet, spacers and Handlespag. 10
- Fixing of Vga Supportpag. 13
- Clamping of the Arch.....pag. 15
- Accessories: FlexFan.....pag. 19
- Support, Warranty and Disclaimer.....pag. 20
- Conclusions.....pag. 23
- Copyright.....pag. 25



Attention!!

Read the Complete Installation Manual before starting
with the DimasTech® Bench/Test Table Hard V2.5
mounting procedure.

ACKNOWLEDGMENTS

Dear Customer, DimasTech Systems Snc would like to thank you for purchasing our DimasTech® Bench/Test Table Hard V2.5.

INTRODUCTION

The DimasTech® Bench/Test Table Hard are cases specially made to satisfy the needs of Fast Assembly of Hardware Components.

This new Product Re-Born in the new version after collecting huge amount of feedbacks from the Expert and also from the inexperienced users that from long time helps us to improve our products quality and features.

Following below there is a list of implemented features of the new Dimastech® Bench/Test Table Hard V2.5.

This Particular case mainly dedicated for the user that it's not satisfied by the normal PC but that are used to frequently assembly and disassembly Hardware Components.

The Dimastech® Bench/Test Table Hard V2.5 can be used as a Test Station, normal PC case for daily using or else it

NOTE

[illegible]

CONCLUSIONS

The DimasTech Bench/Test Table Easy V2.5, reviewed from different website dedicated to the argument, result being a good solution for all the user that wants a different PC case, and that wants some more, the features of fast assembly and disassembly.
Globally recognized as best Test Station from the World Overclocking and Testing community .



can be used for Expositions of Hardware in Fairs to show at the visitor what kind of hardware components are used.

The Bench/Test Hard V2.5 Table has got a special support which enable you to clamp cups (see section: Extreme Cooling, about Cups) with the help o fan arch and threaded bar; this system allows you the clamp a cup, or any tap without using any clips brackets in any position of the motherboard.

to get a quicker disassembly of the components the Bench/Test Hard V2.5 Table has got some new grained screws which clamps any component of the table itself or of the hardware.

The Bench/Test Hard V2.5 Table can be assembled on the Easy model, just clamping it with 4 Rubber feet, this way you get an Extreme Bench real position (you can find the EasyHardV2.5 model in this section of our shop: Bench/Test EasyHard V2.5 Table)

Specifiche Tecniche:

- Bench Table made in SECC 1,5 mm thick
- CNC Lase Cut
- Powder Paint, Phosphate base
- Totally " Made in Italy"
- Laser Cut" Made in Italy", on Bench Table Rear
- Full compatibility with motherboard ATX, Full ATX, MicroAtx, XL-ATX, Mini ATX

- Socket Ventilation with 120x120 Fan Support
- Front Video Card ventilation with 120x120 fan Support
- Plastic Handles ABS,
- Arch in corrugated iron 6mm thick
- Threaded bar M6 for the clamping of cups or taps of any kind
- Special Bolt which runs on the arch and is able to fix the threaded bar and the bolt itself to the arch, using a simple wing nut
- Arch sliding all over the motherboard area, with a complete compatibility with all the present and future motherboards
- Possibility of using cups with a max height of 30 cm
- Compatibility with the new Bench/Test Easy V2.5 Table
- Possibility of Assembling "on top" the new Bench/Test Easy V2.5 Table without hindering the Liquid cooling pipes
- VGA support and more boards included
- Tool free removal of screws

COMPONENTS LIST

- Dimastech® Bench/Test Table Hard V2.5(Top and Below Drawer)
- Hard Drives and Optical Drives Brackets

MANUAL DISCLAIMER

Dimastech Systems Snc reserve the right to revise this document without prior notification. This document have been proofread for errors in translation and accuracy. Despite this, technical and typographical deviations can sometime occur.

This Manual can be updated at any time without preceding notice, changes will be published in future printings.

In no event shall Dimastech Systems Snc be liable for special, incidental, consequential or punitive damages, including, without limitation, damage to other property or person caused by any defect in this product, resulting from any misspellings or inaccurate information in this product manual.

the website www.dimastech.it in the "warranty" section to find more informations.

PRODUCT DISCLAIMER

In no event shall Dimastech Systems Snc be liable for special, incidental, consequential or punitive damages, including, without limitation, damage to other property or person caused by any defect in this product, resulting from the use or improper use of this product.

Attention: The Terms Above are considered accepted at the moment of the purchase.

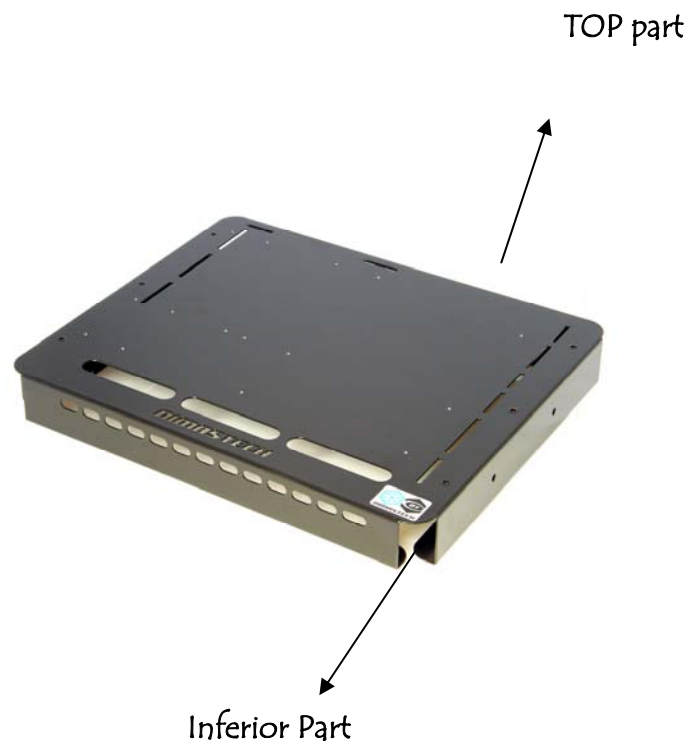
if you do not agree to the terms above contact the reseller from which you have bought the product or DimasTech Systems SNC to receive instructions on how to return the product for a refund.

The right of withdrawal will be handled following the Law.

We suggest to visit the website www.dimastech.it in the "Right of Withdrawal" section to find more informations.

- Psu Bracket
- Expansion Boards Bracket (vga, etc)
- Ventilation Fan(120x120mm) Vertical Bracket
- Ventilation Fan (120x120mm) for Ram Zone
- Complete Kit of ThumbScrews, screws, ThumbNuts for fixing brackets and hardware
- 10 motherboard Spacers (25mm height)
- 2 Dimastech Handles
- 4 Rubber Feet
- Arch, complete with threaded bar





SUPPORT

DimasTech products are subject of serious quality control before being shipped to final users or distributors, should it happen that something is missing or not functioning properly, we recommend you follow the 4 steps outlined below, this will help to have a fast and effective support.

1. Contact your distributor or point of sale
2. Contact directly Dimastech Systems Snc through the support forum or through the "support" section at www.dimastech.it website
3. Contact directly Dimastech Systems Snc through telephone at number +39 030 6865292 (hours 08:00 AM to 5:00 PM GMT +01:00)
4. provide your feedback to help us improve our products and support
e-mail info@dimastech.it

WARRANTY

For a period of 2 years Dimastech Systems Snc warrants his products against defects in material or workmanship in any items produced by DimasTech Systems SNC.

Dimastech Systems Snc does not guarantee an undisturbed or error free conveyance of the product.

The products that are distributed by DimasTech Systems SNC but are produced by a third party and delivered "AS IS" are not included in the warranty. We suggest to visit

ACCESSORIES: FLEXFAN



The FlexFan 120 or 92 are accessories and are on selling separately from the Bench Table Easy V2.5 Bundle, content of FlexFan and mounting below

Package Contents:

- 5 M4x10 screws
- 5 M4 ThumbNuts
- 4 M4x45 Screws

The **FlexFan** have 2 M4 male thread and it fix directly on the "top" of the Bench Table screwing to the male thread to the M4 Female Threaded placed around the motherboard, or on the Ventilation Fans Slots, with a single M4 ThumbNuts.

PACKAGING

The Dimastech® Bench/Test Table Easy V2.5 comes in a Dimastech® packaging easy recognizable; A polistirene packaging protect each components from damage and assure that the Products arrive safe to the purchaser.



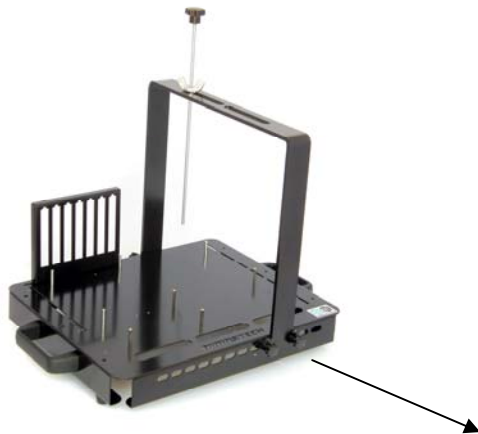
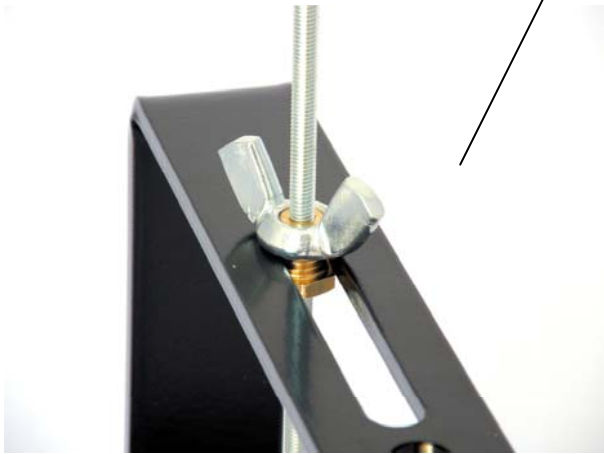


Each **Component** positioned in a polistirene foam, this way every piece is away from damage.



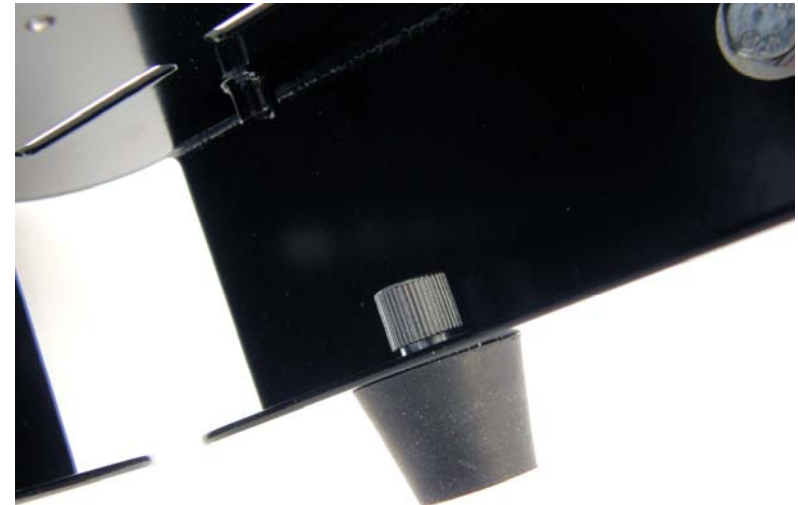
Complete items with cup fixing

Particular of the Bar and Special Support



Arch and Bar

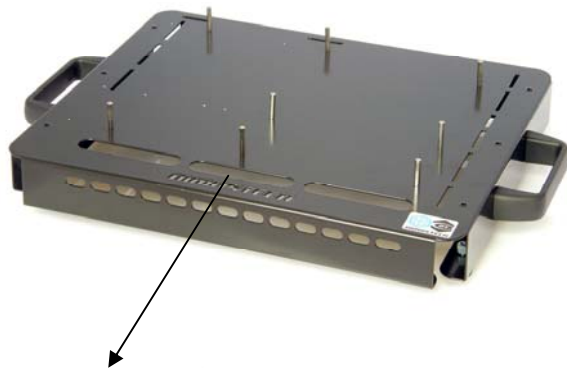
FIXING OF FEET, SPACERS AND HANDLES



Rubber Feet, with Threaded screw, fixable to the "Top" without any adding screw or nuts



Practical handles simply mounted with two screws M6 and

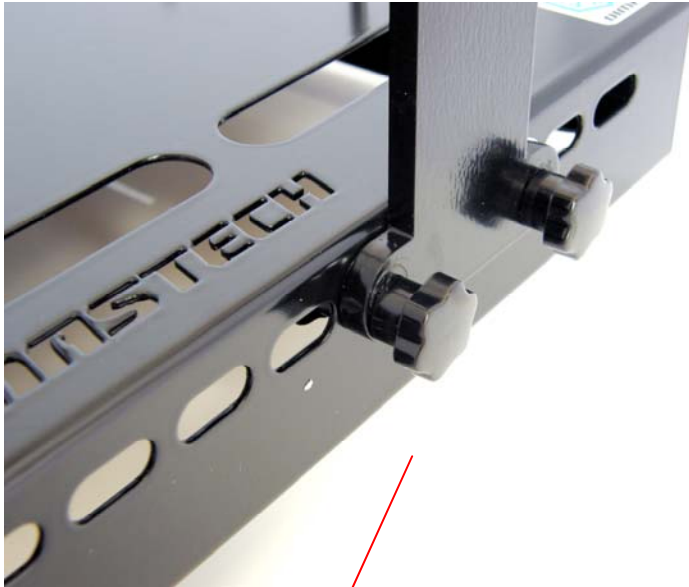


The Motherboard **Spacers (25mm height)** male-female, there are threads on male part to screw directly on "Top"

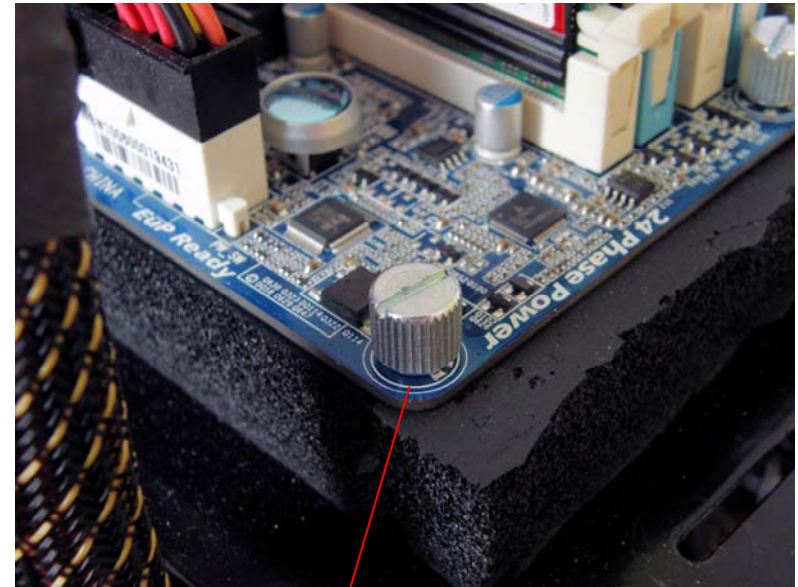


Assembled Arch

CLAMPING OF THE ARCH



The **Arch** is clamped on the Bench/Test Table Hard using a couple of threaded screws (male and female) on the side part of the table



Once motherboard is placed on the Spacers or eventually a Neoprene Layer (optional) is possible to fix with the M3 ThumbScrews.

FIXING OF VGA SUPPORT



The VGA Support fixed to the "Top" with 2 M4 ThumbNuts and 2 M4x10 screws.

